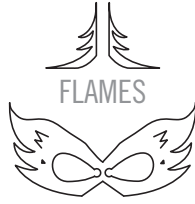


DRAGON PUPPET

From the Kohl's Design It! Lab
Designed by Branden Apitz



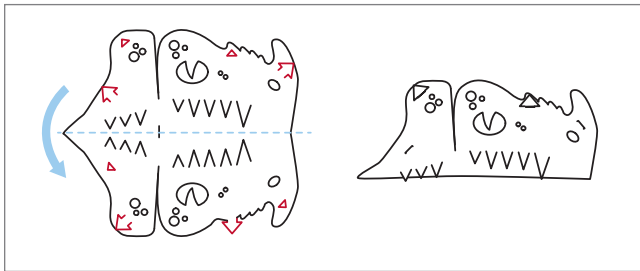
DRAGON HEAD



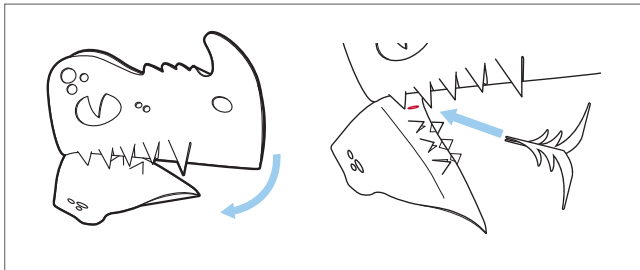
DRAGON HORNS OR MASK



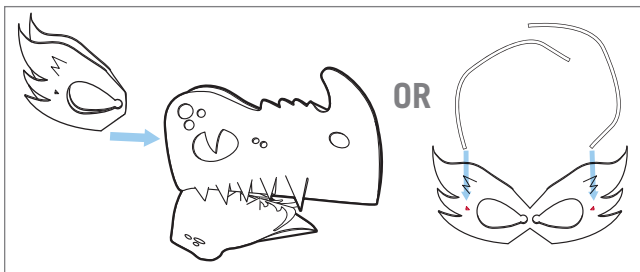
Follow these simple steps!



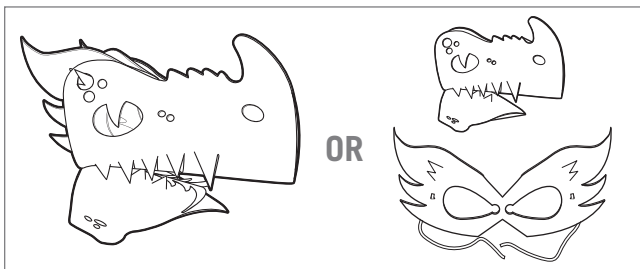
1. Punch out the pieces and make sure to clear all the slots.



2. Fold the dragon head so that the top edges line up. Fit the arrow tabs into the triangle slots.



3. Fold the entire head in half so the teeth come together. Insert the flame pieces any way you would like into slot in mouth.



4. Fold the horns in half and slide into the top of the head.
OR!
To make a mask, use the long strips leftover from the sheet to make a band. Slide the strips into the small triangle slots on the sides of the mask.

5. Congratulations! You have made a dragon puppet!
The dragon's horns can also be worn as a mask!