

3D Star

Final Product

KOHL'S
Design
It! Lab

30

Minutes

4

Difficulty

Tools/Materials



Star Template
Paper
Scissors
Pencil
Ruler (or straight edge tool)
Glue

Directions

- 1 Trace the star template pieces onto paper and cut out.
- 2 Use a ruler to help mark your stars with the necessary fold lines to match the template.
- 3 On your paper star, where the template has indicated a solid fold line, fold toward you. Where it has indicated a dotted line, fold away.
- 4 Begin gluing FRONT 1 and FRONT 2 together, followed by BACK 1 and BACK 2.
- 5 Once built into two separate stars, use glue to connect the front and back pieces together.



Tips

- Project time is cut in half if you wish to only make the front of the star

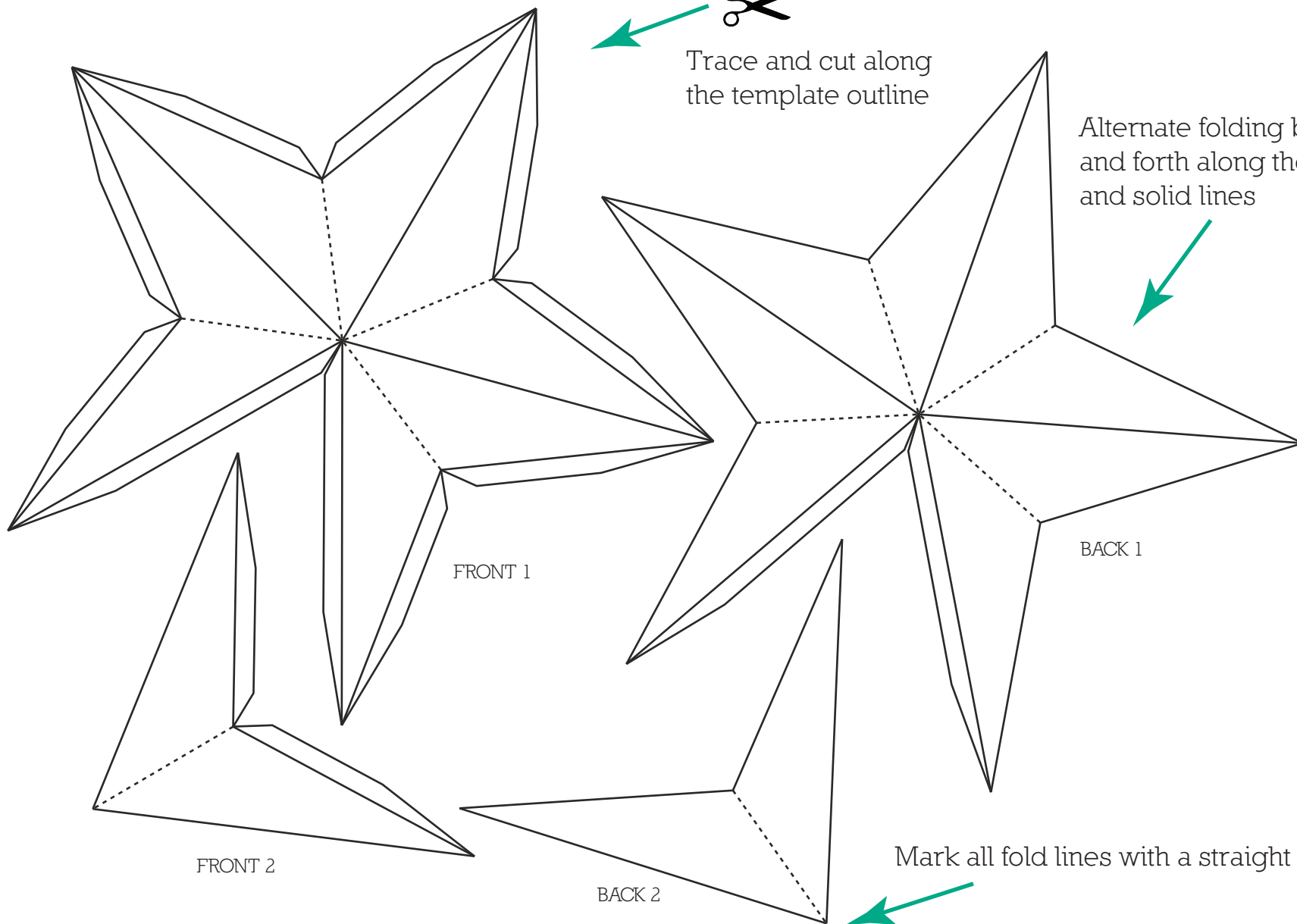
3D Star

Product Template



Trace and cut along the template outline

Alternate folding back and forth along the dotted and solid lines



Mark all fold lines with a straight edge

