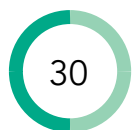


# Bathymetric Map



minutes



difficulty

## Tools & Materials:



-Chipboard (Cereal or snack box)

-Scissors

-Markers / Colored Pencils

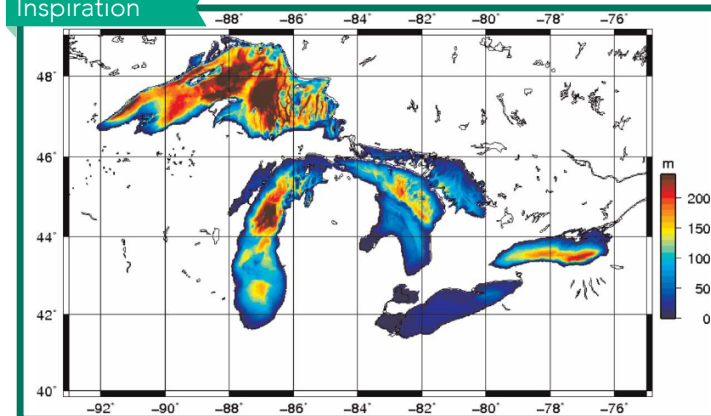
-Paper

## Instructions:

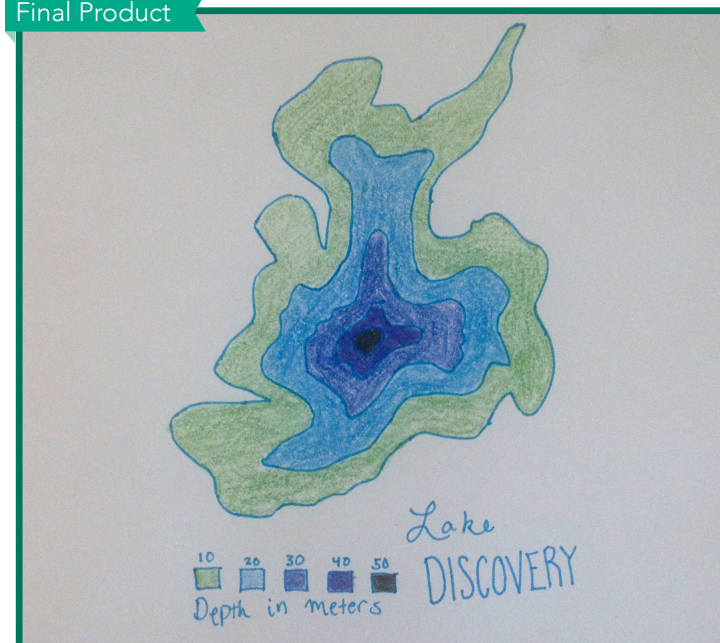
A topographic map measures elevation (or height) above sea level, but how do you measure depth? Bathymetry (bah-THI-muh-tree) uses contour lines and how close they are to each other to show changes in lake, ocean, and river depths.

Create outline shapes for your own lake and illustrate what's going on beneath the surface with this activity!

## Inspiration



## Final Product



## Directions:

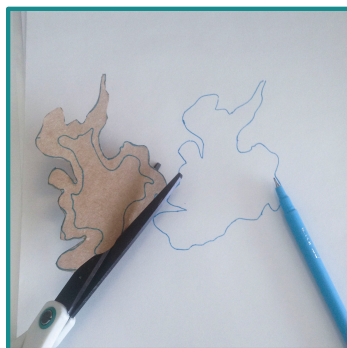
1. Use a flat piece of upcycled chipboard (cut a square out of a cereal box for example) and draw an outline of your very own lake.



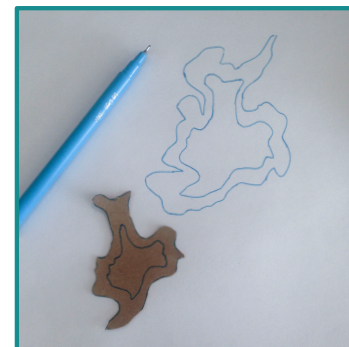
2. Cut around the outline of your lake. Place this lake template on the center of your piece of paper and trace!



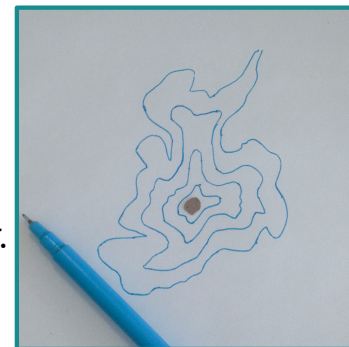
3. Draw another shape in the interior of your lake template, close to the outside perimeter. This will be your first level of depth. Cut along the line of this new shape.



4. Place your trimmed template inside the original lake outline you drew on your paper. Trace this new shape as well.



5. Repeat this process as many times as you'd like, cutting off another "depth level" around the perimeter of your lake until you reach the center. Trace each piece on the interior of your lake.



6. Once you have cut and traced your last layer into your new map, use colors to further illustrate depth! Darkest will be the smallest/deepest shape. Use lighter colors as you work your way to the outside!

